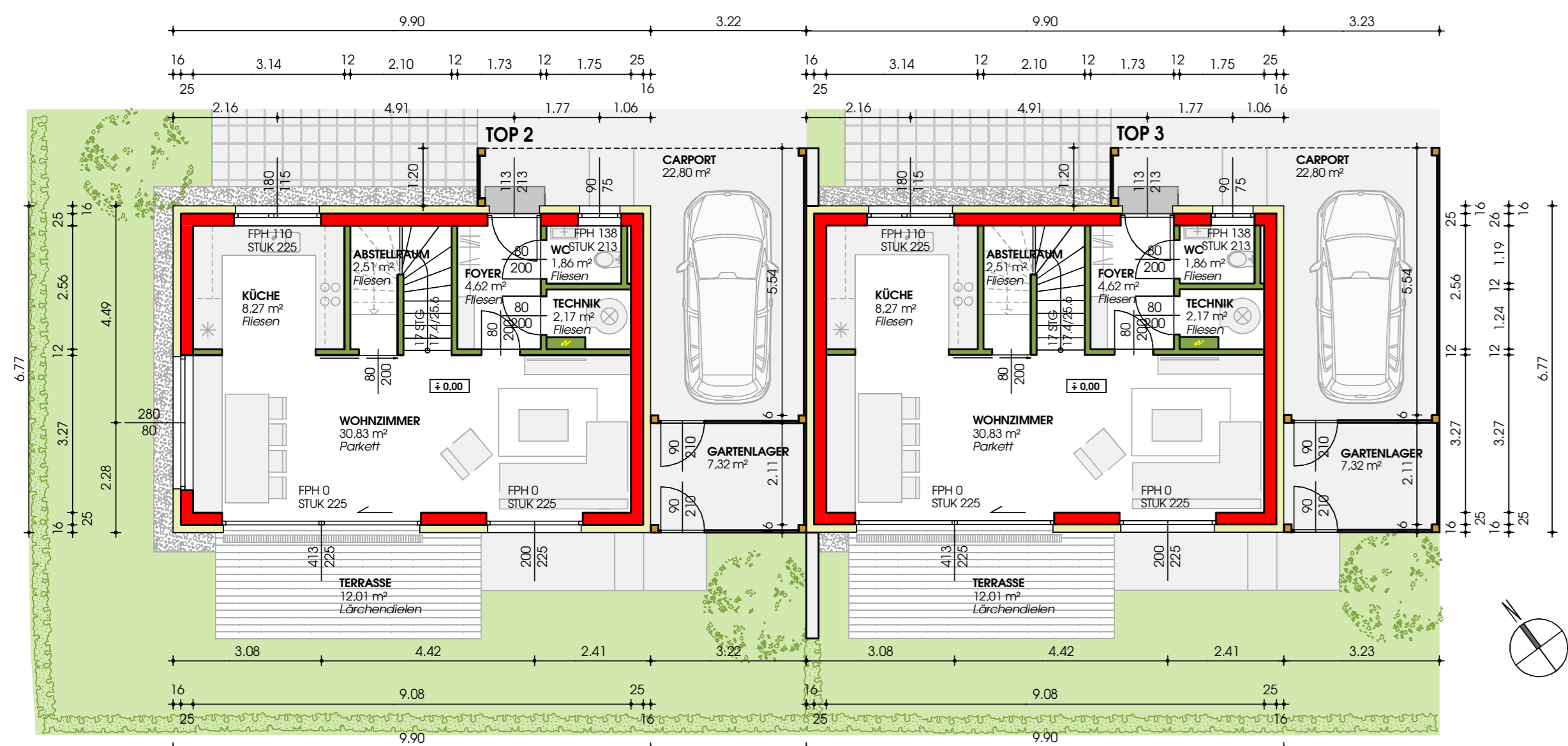
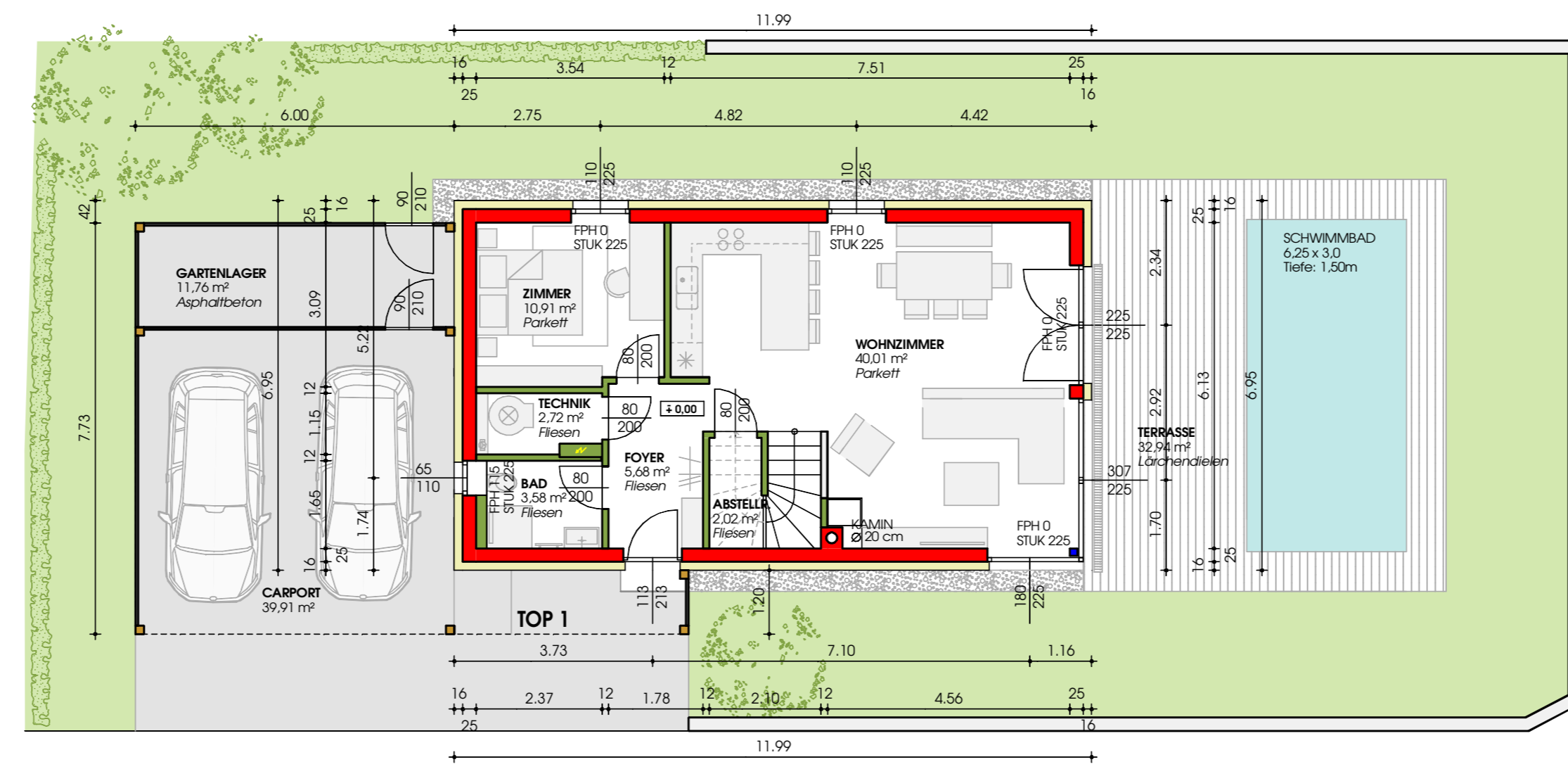


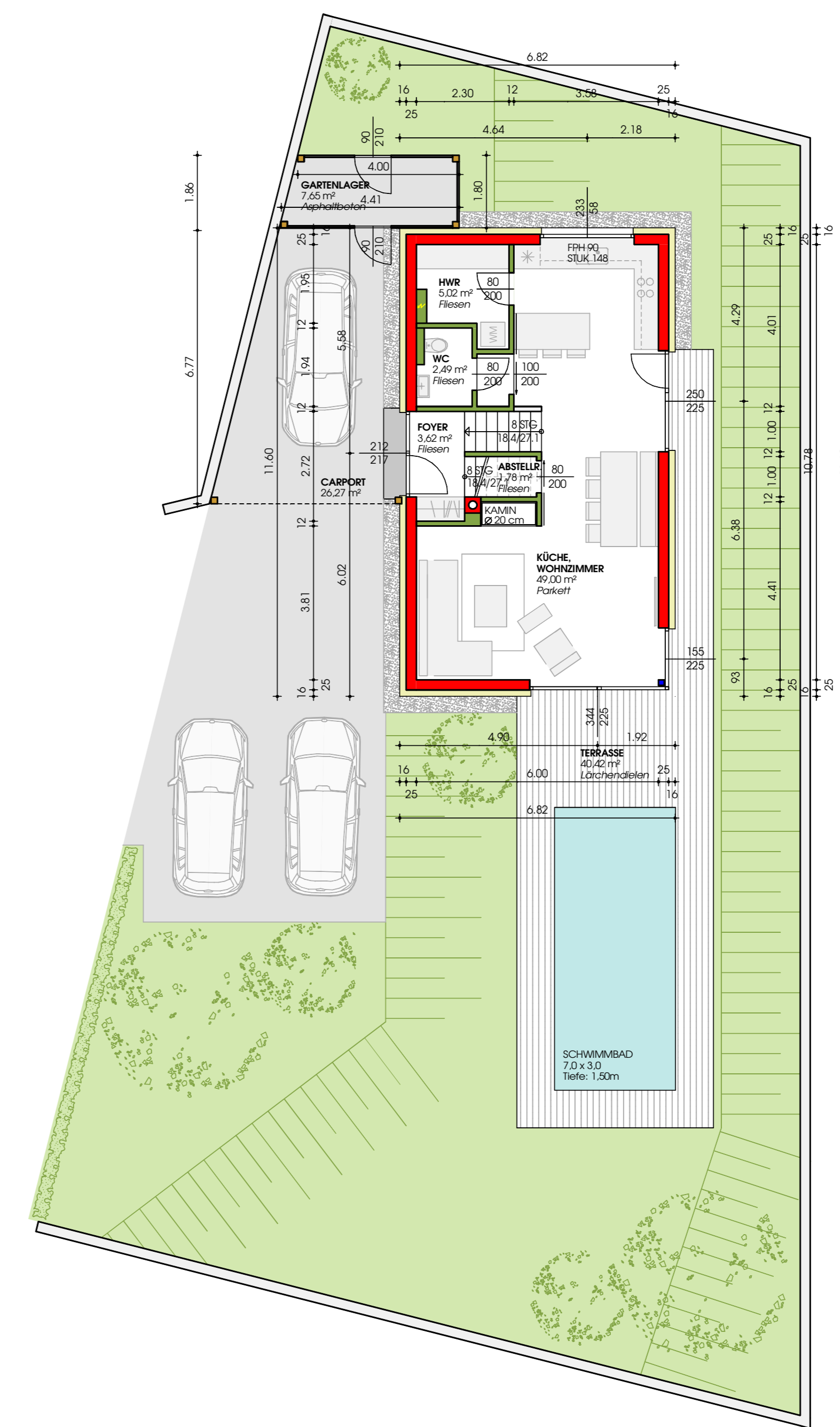
ERDGESCHOSS TOP 1, TOP 2



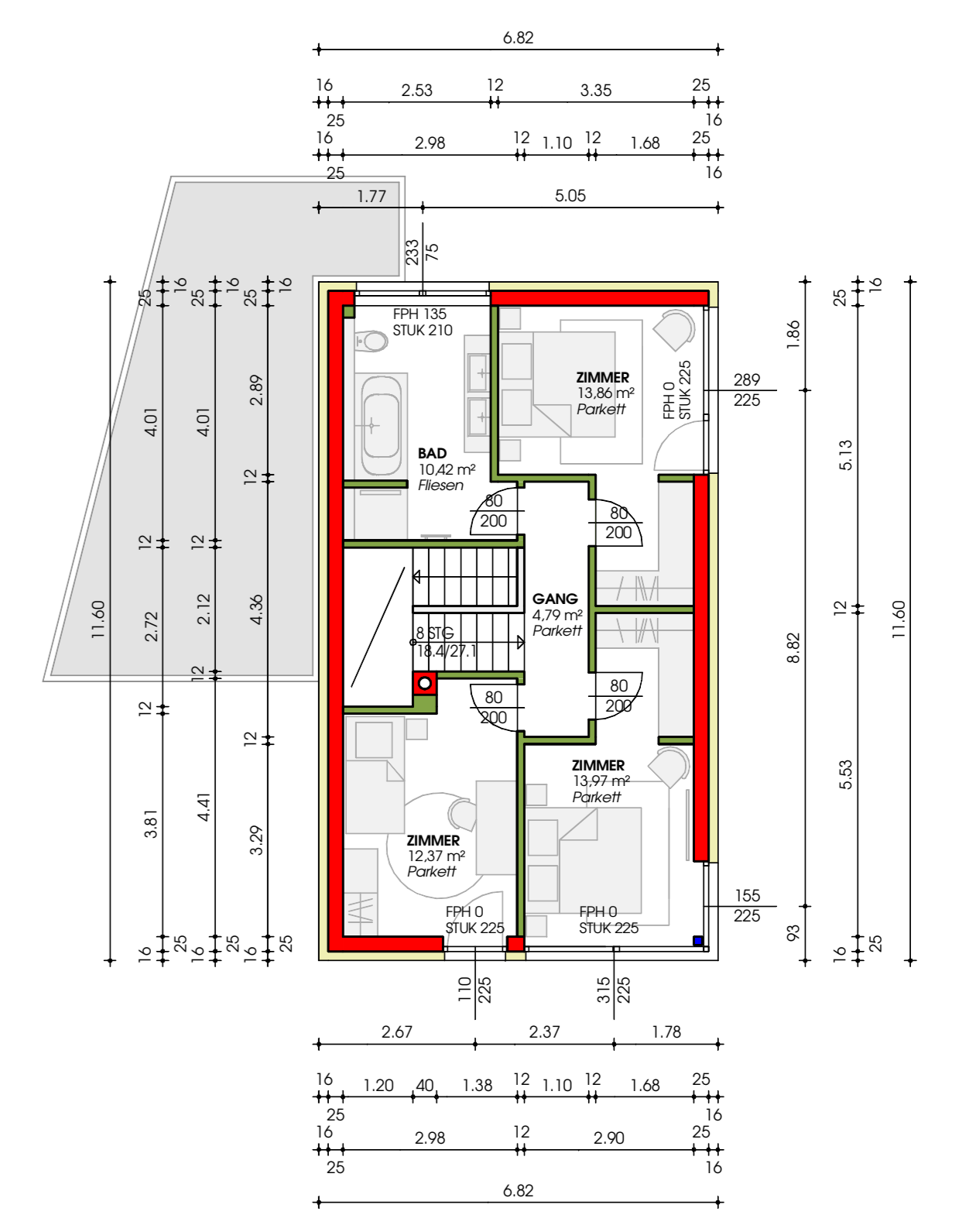
ERDGESCHOSS TOP 3



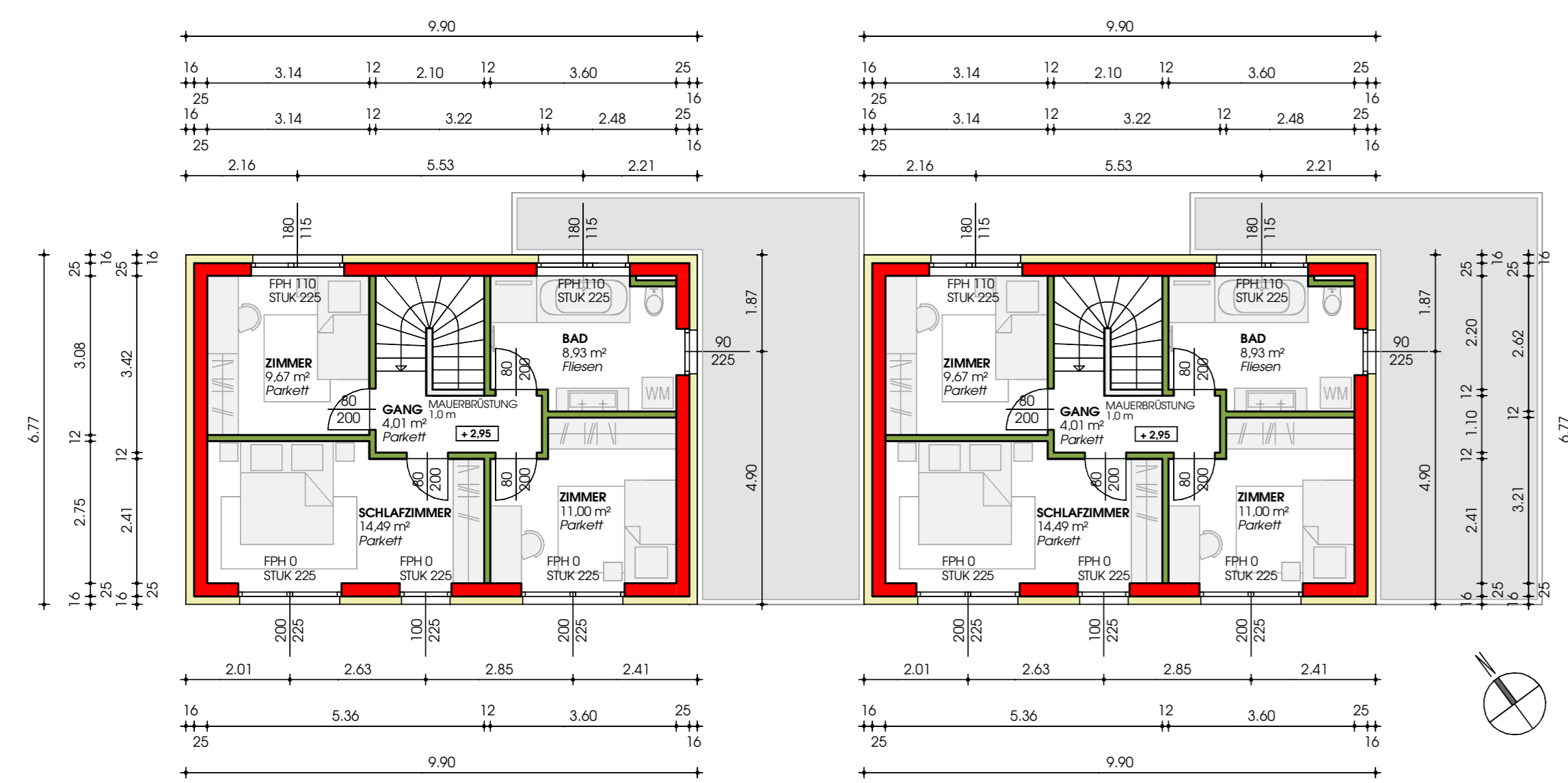
ERDGESCHOSS TOP 4



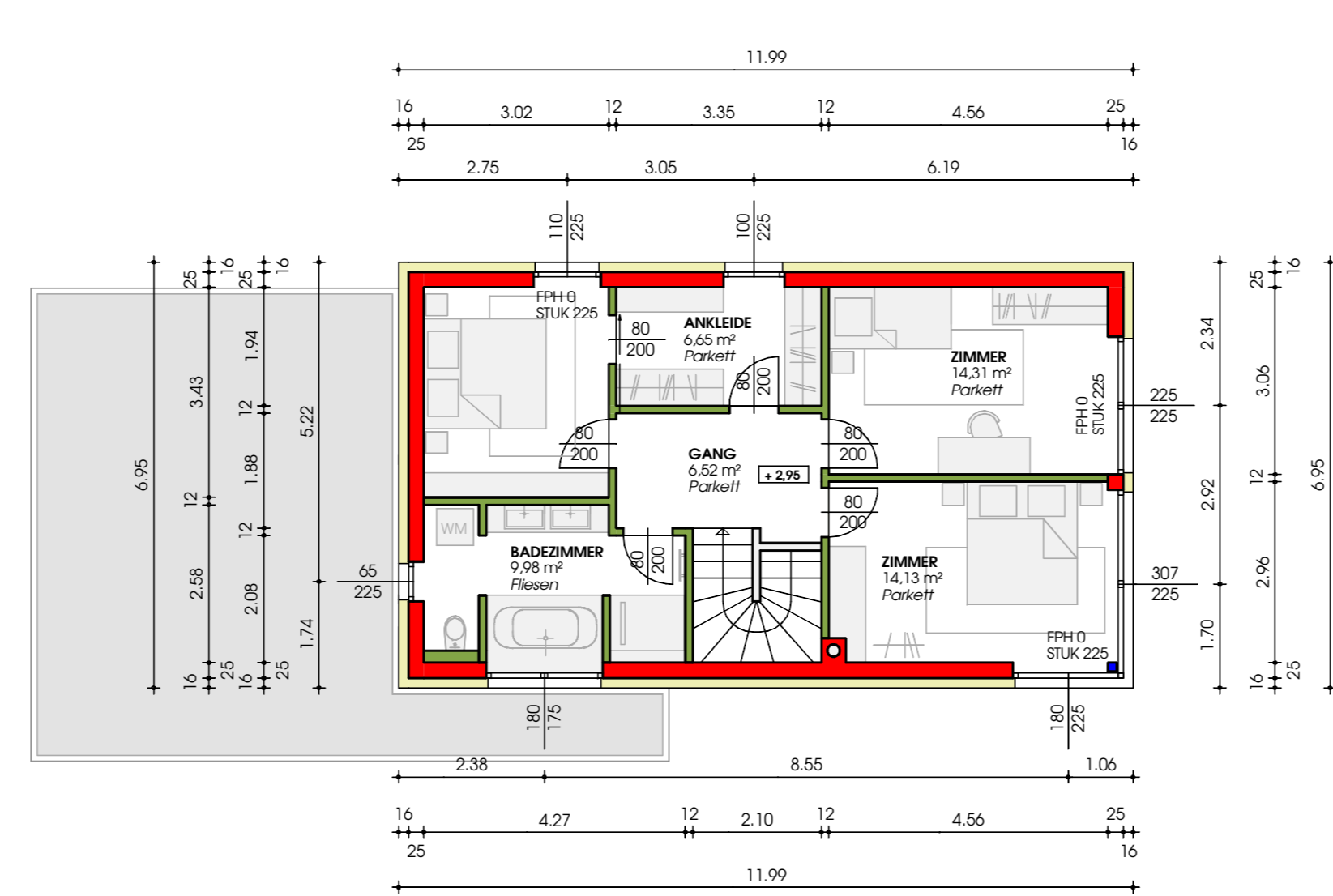
OBERGESCHOSS TOP 4



OBERGESCHOSS TOP 1, TOP 2



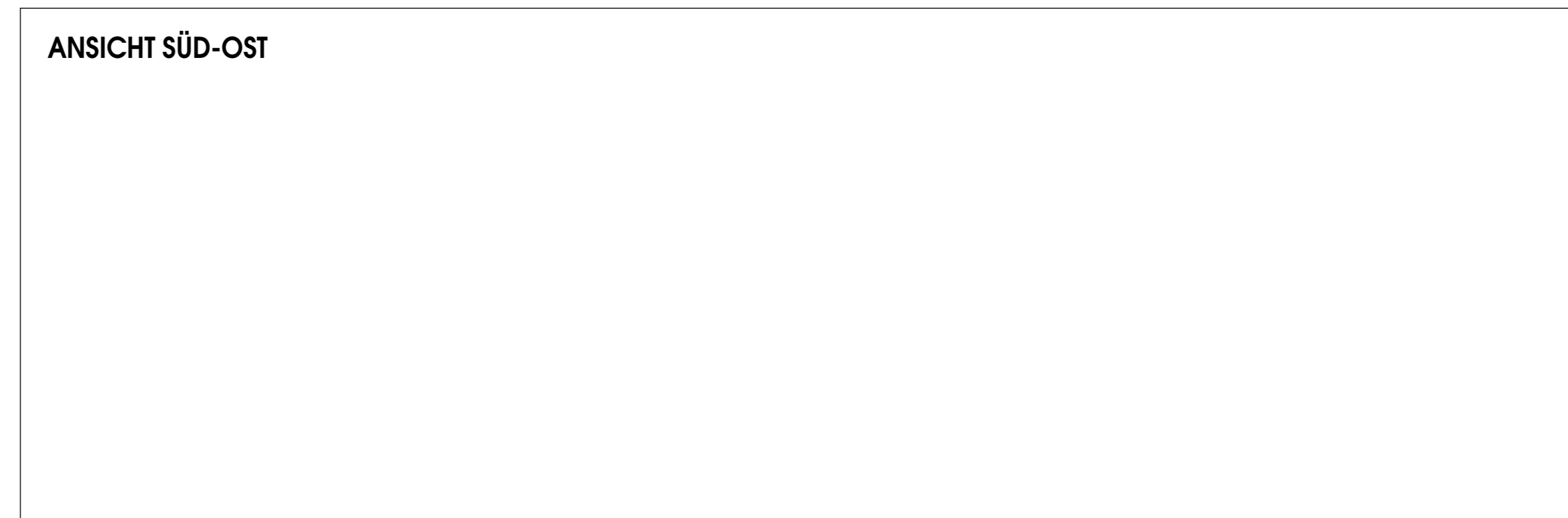
OBERGESCHOSS TOP 3



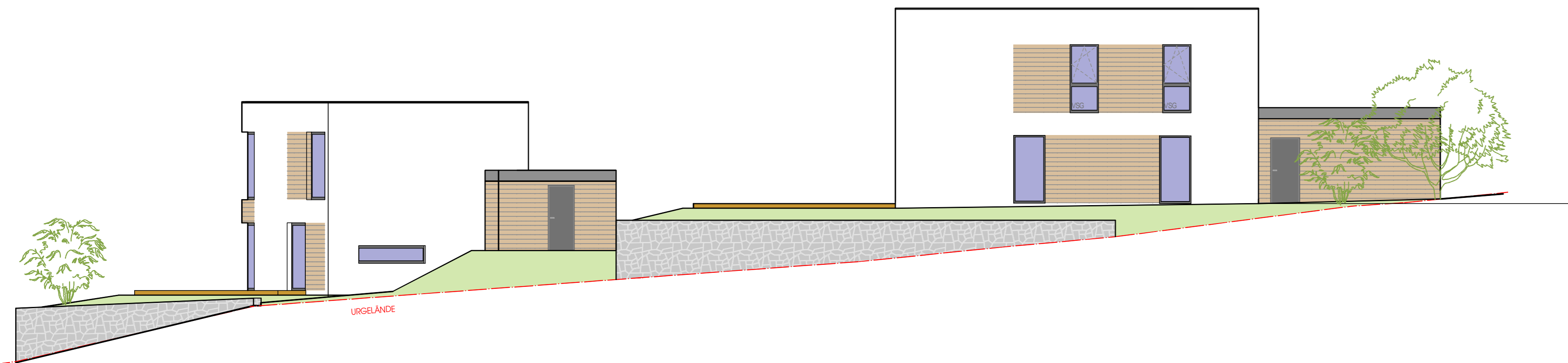
ANSICHT SÜD-WEST



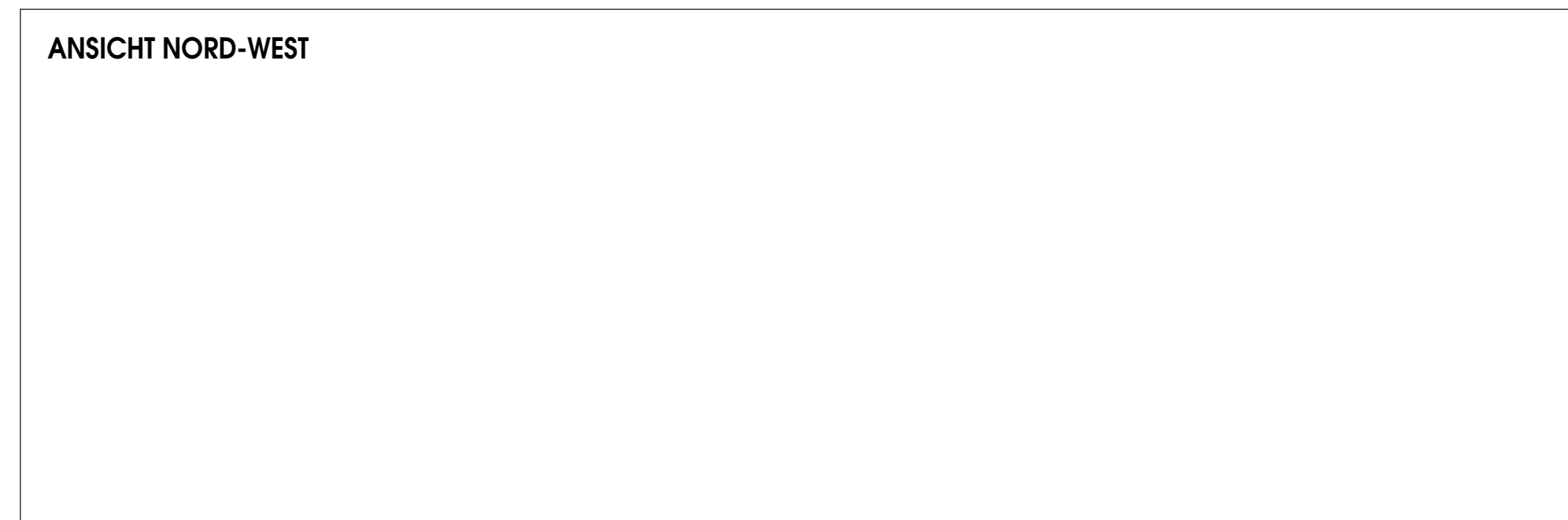
ANSICHT SÜD-OST



ANSICHT NORD-OST



ANSICHT NORD-WEST

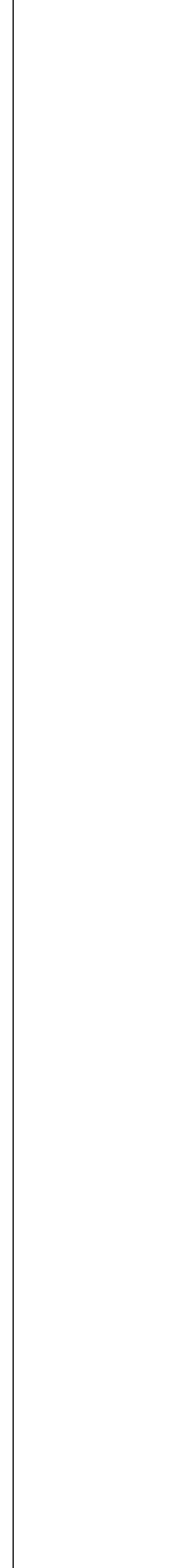


SCHNITT A-A

SCHNITT B-B

SCHNITT C-C

LAGEPLAN



EINREICHPLAN

FÜR DEN BAU EINER WOHNUNGSANLAGE MIT 12 WOHNUNGEN

KG-Nr. 51233 SPBACHZELL	EZ: 67	GRF-Nr. 147
Grundigentümer und Bauwerber:		
Planverfasser: HEINWERT Bauförger GmbH Stockhofstraße 9 4020 Linz	Bauführer:	
Behörde:		
Planinhalt:		
Datum: 29.04.2022	Plan-Nr.: 001	Index: C